

CNR Technical Support

John Weeks 435-757-7677

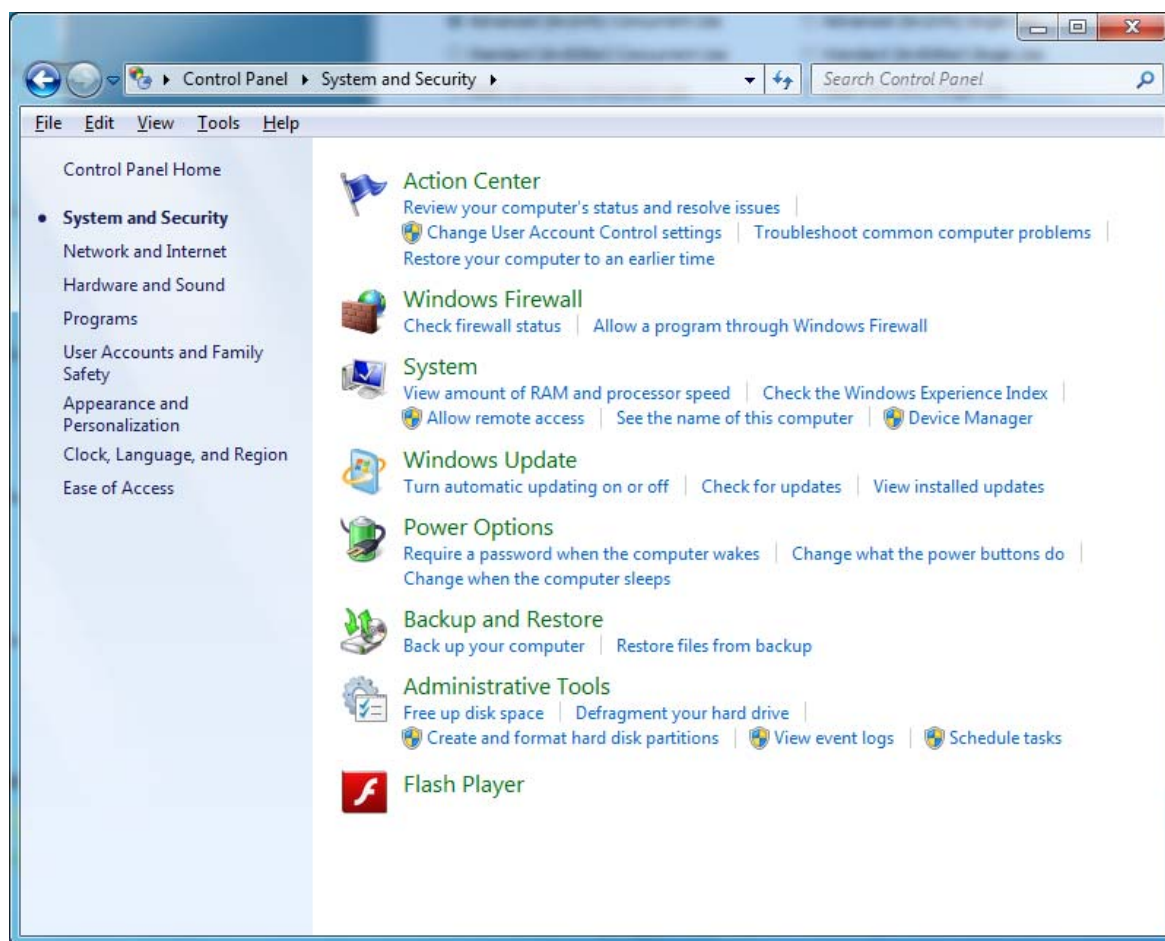
ArcGIS VPN configuration

You can install VPN from <http://www.it.usu.edu/vpn/>

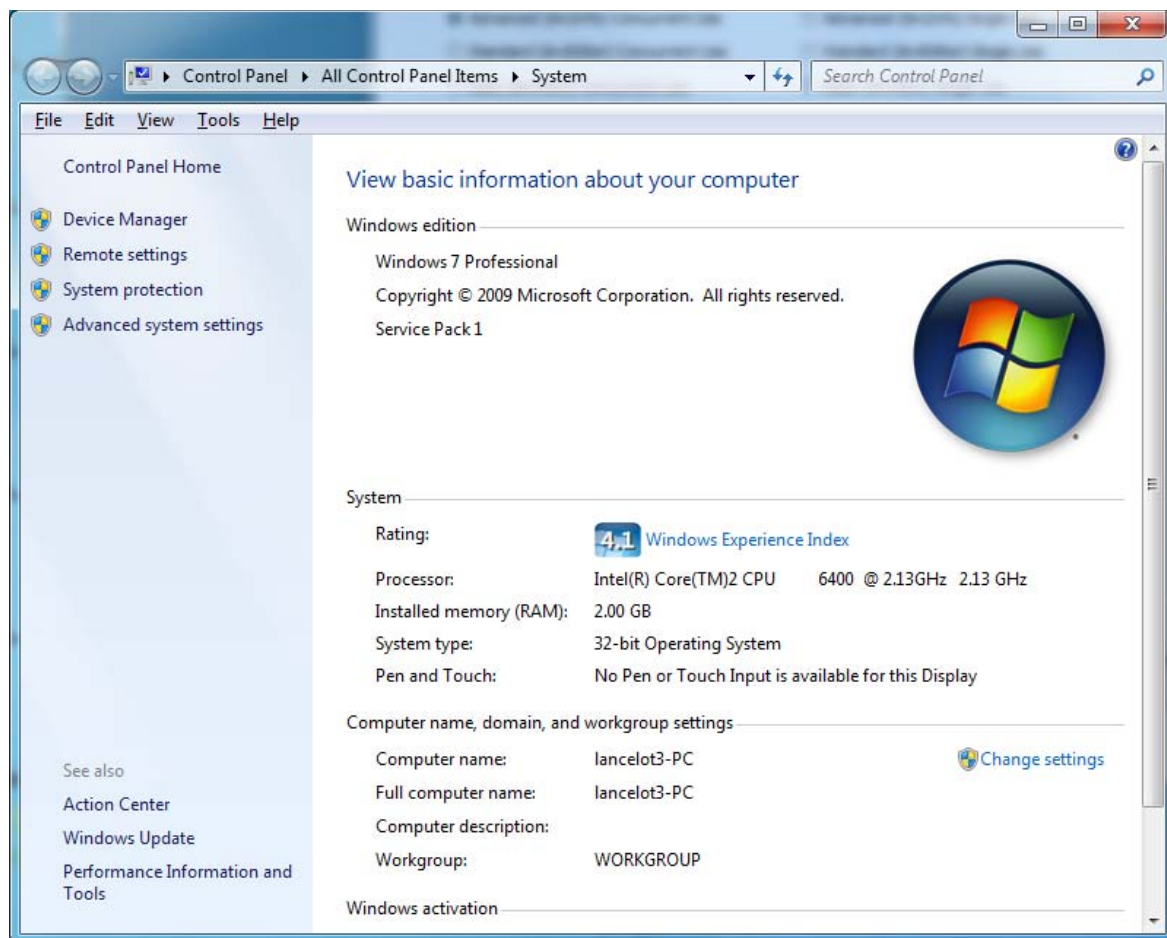
Due to slower network connections from off campus you will want to set your FLEXLM_TIMEOUT environment variable to 50000000.

Open:

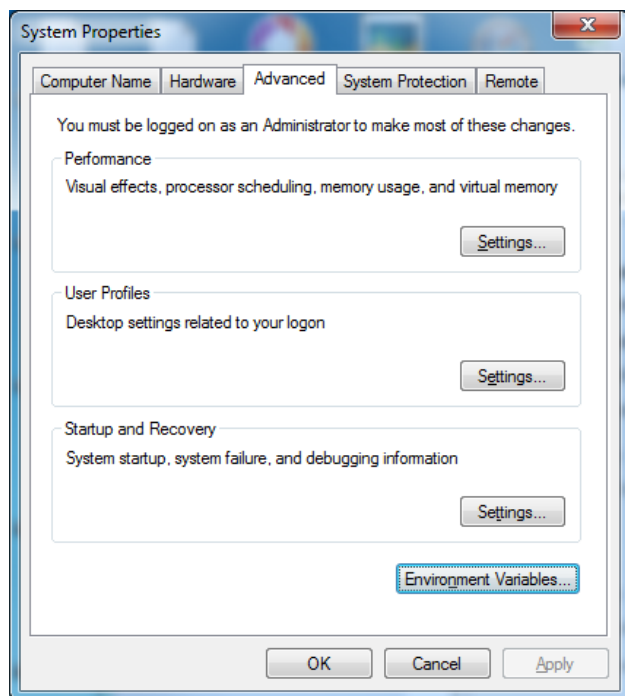
Control Panel -> System and Security -> System



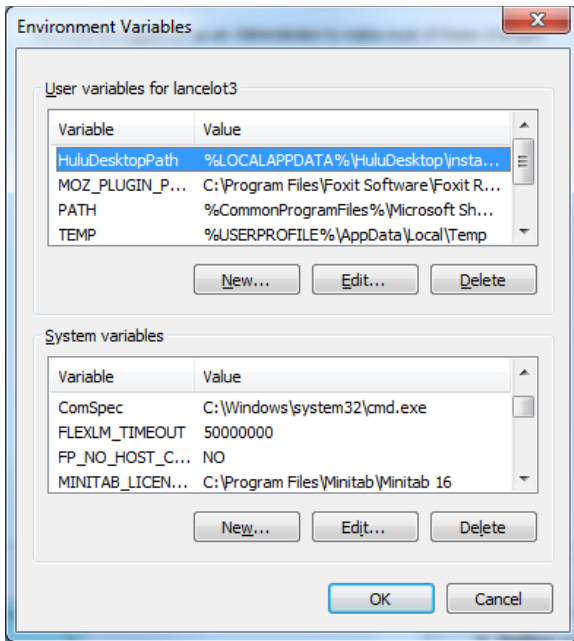
Select "Advanced system settings" from the left column.



Select the “Environment variables...” button at the bottom of the Advanced tab.



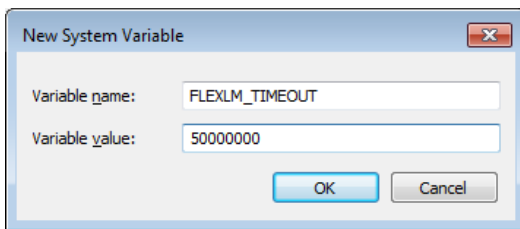
Under “System variables” press the “New...” button.



Enter “FLEXLM_TIMEOUT” under Variable name:

Enter “50000000” (7 zeros) under Variable value:

Click “OK”



CNR Technical Support

Proudly powered by WordPress.